

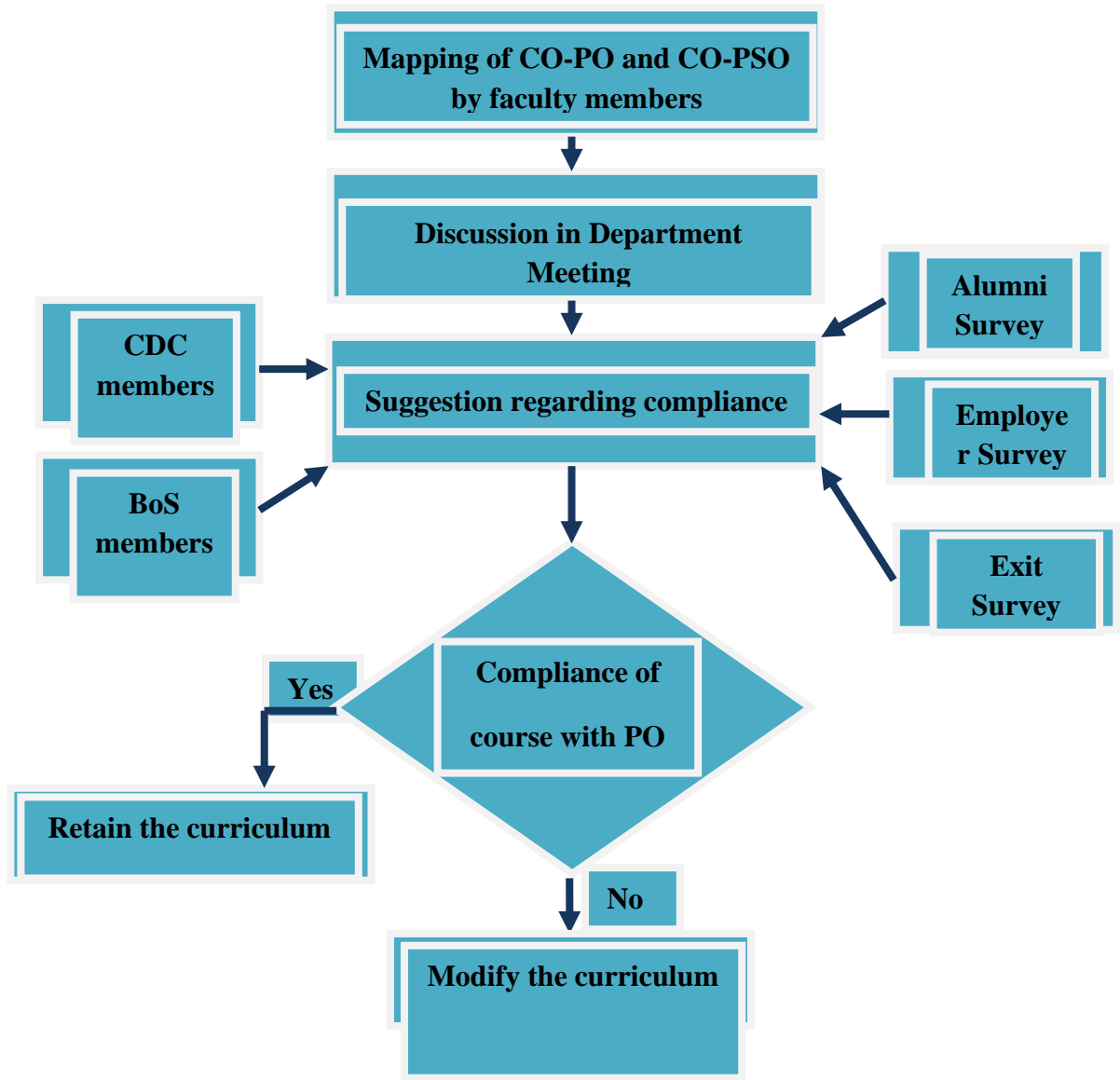
## **Process used to identify extent of compliance of the curriculum for attaining the Program Outcomes and Program Specific Outcomes.**

The B.Tech. Electronics and Communication Engineering curriculum comprises of (i) Basic science (ii) Engineering science (iii) Humanities and social science (iv) Professional core (v) Professional elective (vi) Open elective.

The steps followed to ensure the compliance of curriculum for attaining program outcome and program specific outcome are summarized below:

- Each subject will have three to six Course Outcomes (COs).
- The course outcomes are mapped to relevant Program Outcomes (POs) namely PO 01 to PO12 along with three Program Specific Outcomes (PSOs). The mapping is done by team of faculty along with Head of the Department.
- After CO-PO and CO-PSO mapping, discussion with faculty members regarding the compliance of the curriculum is done through department meeting. The collected views will be taken to Curriculum Development Cell (CDC) meeting.
- The Curriculum Development Cell members will analyze whether the curriculum meets the desired program outcome and program specific outcome. If necessary, the CDC members will suggest the introduction of new electives and one credit courses to meet specific program or program specific outcome.
- The views expressed by Curriculum Development Cell will be expressed in the Board of Studies. The BoS members will analyse the recommendation of CDC committee and it will also suggest the introduction of new laboratory courses, electives to strengthen the curriculum.
- In addition to CDC committee and BoS committee, feedbacks regarding the compliance of courses are obtained from external examiners, academic experts who are invited to conduct project viva-voce examination and alumni.
- The Head of the Department along with the academic co-ordinator will interact with final year students after the final viva-voce examination and collect their feedback which is termed as exit survey. It is also used as a tool to analyze the compliance of the curriculum with program outcome and program specific outcome.

The flow diagram of the above mentioned process is given below in the form of flow diagram.



Flowchart to check the compliance of PO and PSO through program curriculum