

## INTERNAL QUALITY ASSURANCE CELL [2008-2009] - CRITERIA / SCALE FOR ASSESSMENT

SI No.	CRITERIA / YEAR	Maximum %	No. / Range	Score	
1	Student intake (Unfilled Seats)	5	0	5	
			1-5%	2.5	
			6-10%	1	
			>10%	0	
2	No. of New programs introduced	5	> 3	5	
			1 to 3	2.5	
			0	0	
			b) No. of add-on programs / courses conducted	>5	5
				3 to 5	2.5
				1 or 2	1
0	0				
3	No. collaborations / (MoU Signed]	2.5	>2	2.5	
			1 or 2	1	
			0	0	
4	Infrastructure / Facilities added	2.5	> 10 lakhs	2.5	
			< 10 lakhs	1	
			0	0	
5	No. of new faculty with Ph.D. inducted	5	>3	5	
			2 or 3	2.5	
			1	1	
			0	0	
6	Seminars / Conferences / Symposiums (at National / International Level)	5	> 3	5	
			2 or 3	2.5	
			1	1	
			0	0	
	a) No. of Symposiums / conferences conducted	5	> 3	5	
			2 or 3	2.5	
			1	1	
			0	0	

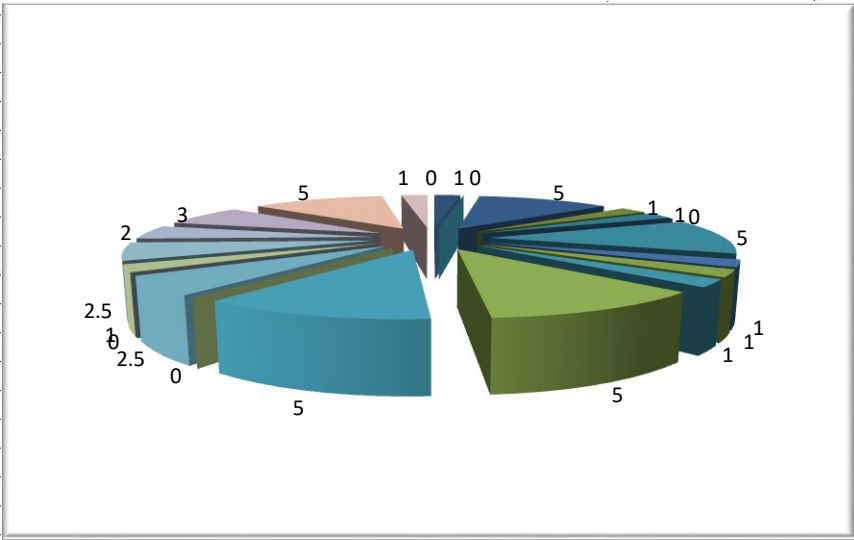
SI No.	CRITERIA / YEAR	Maximum %	No. / Range	Score
	<b>b) No. of seminars/conferences attended by faculty (in%)</b>	5	>60%	5
			40-60%	2.5
			21-40%	1
			<20%	0
	<b>c) No. of faculty presented papers in conferences (in %)</b>	5	>50%	5
			31-50%	2.5
			10-30%	1
			<10%	0
7	<b>No. of papers published</b>	5	>40%	5
			21-40%	2.5
			5-20%	1
			<5%	0
8	<b>Faculty improved Qualifications</b>			
	<b>a) No. of Faculty awarded Ph.D.</b>	5	above 3	5
			2 or 3	2.5
			1	1
			0	0
	<b>b) No. of faculty registered for Ph.D.</b>	5	above 3	5
			2 or 3	2.5
			1	1
			0	0
9	<b>Funded research proposals / Consultancy</b>			
	<b>a) No. of research projects Sanctioned</b>	5	> 3	5
			2 or 3	2.5
			1	1
			0	0

SI No.	CRITERIA / YEAR	Maximum %	No. / Range	Score
	<b>b) No. of research project proposals Submitted</b>	5	> 5	5
			3 to 5	2.5
			1 to 2	1
			0	0
	<b>c) Funds received for conducting conferences</b>	5	> 2 lakhs	5
			1 lakh to 2 lakhs	2.5
			< 1 lakh	1
			0	0
	<b>d) Funds generated through consultancy</b>	5	> 5 lakhs	5
			3 lakhs and 5 lakhs	2.5
			< 3 lakhs	1
			0	0
10	<b>No. of faculty contributing to other activities (in %)</b>	5	> 50%	5
			30% and 50%	2.5
			<30%	0
11	<b>No. of students presented papers / participated in conferences (in %)</b>	5	>10%	5
			7% - 10%	3
			2% - 6%	2
			<2%	0
12	<b>No. of students received awards (in %)</b>	5	>10%	5
			7% - 10%	3
			2% - 6%	2
			<2%	0
13	<b>No. of students placed (in %)</b>	5	>30%	5
			10% and 30%	2.5
			<10%	0

SI No.	CRITERIA / YEAR	Maximum %	No. / Range	Score
14	Pass Percentage	2.5	>90%	2.5
			80% and 90%	2
			60% and 79%	1
			<60%	0
15	No. of students subjected to disciplinary Proceedings (in %)	2.5	>7%	-2.5
			3% -7%	-1
			<3%	0
			0	2.5
<b>TOTAL (out of 100)</b>		100		

<b>CIVIL ENGINEERING</b>				
<b>SI No.</b>	<b>Criteria</b>	<b>Data</b>	<b>Data</b>	<b>Score</b>
1	Student intake - Unfilled Seats (in %)	87 / 91	4%	2.5
2	No. of New programs introduced			
	a) No. of New programs introduced	1	1	2.5
	b) No. of add-on programs / courses conducted	4	4	2.5
3	No. collaborations / (MoU Signed]	0	0	0
4	Infrastructure / Facilities added	5,20,000	5,20,000	1
5	No. of new faculty inducted with Ph.D.	0	0	0
6	Seminars / Conferences / Symposiums			
	a) No. of Symposiums / Conferences conducted	>4	>4	5
	b) No. of symposiums / Conferences attended (in %)	17 / 16	106%	5
	c) No. of faculty presented papers in conferences (in %)	8 / 16	50%	2.5
7	No. of papers published (in %)	3 / 16	25%	1
8	Faculty improved Qualifications			
	a) No. of Faculty awarded Ph.D.	1	1	1
	b) No. of faculty registered for Ph.D.	1	1	1
9	Funded research proposals / Consultancy			
	a) No. of research projects Sanctioned	2	2	2.5
	b) No. of proposals Submitted	7	7	5
	c) Funds received for conducting conferences	30000	30000	1
	d) Funds generated through consultancy	92,200	92,200	1
10	No. of faculty contributing to other activities (in %)	11 / 16	68.75%	5
11	No. of students presented papers / participated in Conferences (in %)	5 / 286	1%	0
12	No. of students received awards (in %)	16 / 286	5%	2
13	No. of students placed (in %)	25 / 60	41.66%	5
14	Pass Percentage	44 / 60	73.33%	1
15	No. of students subjected to disciplinary Proceedings (in %)	8 / 286	2%	0

<b>SCHOOL OF MECHANICAL SCIENCES</b>				
<b>SI No.</b>	<b>Criteria</b>	<b>Data</b>	<b>Data</b>	<b>Score</b>
1	Student intake - Unfilled Seats (in %)	208 / 223	6%	1
2	No. of New programs introduced			
	a) No. of New programs introduced	0	0	0
	b) No. of add-on programs / courses conducted	6	6	5
3	No. collaborations / (MoU Signed]	1	1	1
4	Infrastructure / Facilities added	8,40,934	8,40,934	1
5	No. of new faculty inducted with Ph.D.	0	0	0
6	Seminars / Conferences / Symposiums			
	a) No. of Symposiums / Conferences conducted	4	4	5
	b) No. of symposiums / Conferences attended (in %)	15 / 41	36.58%	1
	c) No. of faculty presented papers in conferences (in %)	4 / 41	10%	1
7	No. of papers published (in %)	2 / 41	5%	1
8	Faculty improved Qualifications			
	a) No. of Faculty awarded Ph.D.	4	4	5
	b) No. of faculty registered for Ph.D.	9	9	5
9	Funded research proposals / Consultancy			
	a) No. of research projects Sanctioned	0	0	0
	b) No. of proposals Submitted	4	4	2.5
	c) Funds received for conducting conferences	0	0	0
	d) Funds generated through consultancy	15000	15000	1
10	No. of faculty contributing to other activities (in %)	12 / 40	30%	2.5
11	No. of students presented papers / participated in Conferences (in %)	14 / 552	2%	2
12	No. of students received awards (in %)	43 / 552	7%	3
13	No. of students placed (in %)	39 / 73	53.42%	5
14	Pass Percentage	58 / 73	79.45%	1
15	No. of students subjected to disciplinary Proceedings (in %)	8 / 552	1%	0
<b>TOTAL (out of 100)</b>				<b>43</b>



<b>ELECTRONICS &amp; COMMUNICATION ENGINEERING</b>			
<b>SI No.</b>	<b>Criteria</b>	<b>Data</b>	<b>Data</b>
1	Student intake - Unfilled Seats (in %)	319 / 327	2%
2	No. of New programs introduced		
	a) No. of New programs introduced	0	0
	b) No. of add-on programs / courses conducted	9	9
3	No. collaborations / (MoU Signed]	1	1
4	Infrastructure / Facilities added	3156626	3156626
5	No. of new faculty inducted with Ph.D.	0	0
6	Seminars / Conferences / Symposiums		
	a) No. of Symposiums / Conferences conducted	7	7
	b) No. of symposiums / Conferences attended (in %)	41 / 50	82%
	c) No. of faculty presented papers in conferences (in %)	46 / 50	92%
7	No. of papers published (in %)	5 / 50	10%
8	Faculty improved Qualifications		
	a) No. of Faculty awarded Ph.D.	1	1
	b) No. of faculty registered for Ph.D.	6	6
9	Funded research proposals / Consultancy		
	a) No. of research projects Sanctioned	0	0
	b) No. of research project proposals Submitted	1	1
	c) Funds received for conducting conferences	2,32,500	2,32,500
	d) Funds generated through consultancy	861834	861834
10	No. of faculty contributing to other activities (in %)	25 / 50	50%
11	No. of students presented papers / participated in Conferences (in %)	42 / 1010	13%
12	No. of students received awards (in %)	85 / 1010	8%
13	No. of students placed (in %)	137 / 220	62.27%
14	Pass Percentage	198 / 220	90%
15	No. of students subjected to disciplinary Proceedings (in %)	22 / 1010	2%
	<b>TOTAL (out of 100)</b>		



Score
2.5
0
5
1
2.5
0
5
5
5
1
1
5
0
1
5
5
5
5
3
5
2
0
<b>64</b>

<b>ELECTRICAL &amp; ELECTRONICS ENGINEERING</b>				
<b>SI No.</b>	<b>Criteria</b>	<b>Data</b>	<b>Data</b>	<b>Score</b>
1	Student intake - Unfilled Seats (in %)	80 / 91	12%	0
2	No. of New programs introduced			
	a) No. of New programs introduced	0	0	0
	b) No. of add-on programs / courses conducted	2	2	1
3	No. collaborations / (MoU Signed]	1	1	1
4	Infrastructure / Facilities added	21,99,436	21,99,436	2.5
5	No. of new faculty inducted with Ph.D.	0	0	0
6	Seminars / Conferences / Symposiums			
	a) No. of Symposiums / Conferences conducted	2	2	2.5
	b) No. of symposiums / Conferences attended (in %)	23 / 18	111%	5
	c) No. of faculty presented papers in conferences (in %)	3 / 18	17%	1
7	No. of papers published (in %)	4 / 18	17%	1
8	Faculty improved Qualifications			
	a) No. of Faculty awarded Ph.D.	1	1	1
	b) No. of faculty registered for Ph.D.	4	4	5
9	Funded research proposals / Consultancy			
	a) No. of research projects Sanctioned	0	0	0
	b) No. of proposals Submitted	0	0	0
	c) Funds received for conducting conferences	11000	11000	1
	d) Funds generated through consultancy	3,77,412	3,77,412	2.5
10	No. of faculty contributing to other activities (in %)	14 / 18	77%	5
11	No. of students presented papers / participated in Conferences (in %)	6 / 289	2%	2
12	No. of students received awards (in %)	7 / 289	2%	2
13	No. of students placed (in %)	33 / 72	45.83%	5
14	Pass Percentage	68 / 72	94.44%	2.5
15	No. of students subjected to disciplinary Proceedings (in %)	12 / 289	4%	-1

	<b>TOTAL (out of 100)</b>			<b>39</b>

<b>ELECTRONICS &amp; INSTRUMENTATION ENGINEERING</b>				
<b>SI No.</b>	<b>Criteria</b>	<b>Data</b>	<b>Data</b>	<b>Score</b>
1	Student intake - Unfilled Seats (in %)	111 / 116	4%	2.5
2	No. of New programs introduced			
	a) No. of New programs introduced	1	1	2.5
	b) No. of add-on programs / courses conducted	1	1	1
3	No. collaborations / (MoU Signed]	1	1	1
4	Infrastructure / Facilities added	2,08,000	2,08,000	1
5	No. of new faculty inducted with Ph.D.	1	1	1
6	Seminars / Conferences / Symposiums			
	a) No. of Symposiums / Conferences conducted	2	2	2.5
	b) No. of symposiums / Conferences attended (in %)	18 / 16	112%	5
	c) No. of faculty presented papers in conferences (in %)	23 / 16	143%	5
7	No. of papers published (in %)	1 / 16	6%	1
8	Faculty improved Qualifications			
	a) No. of Faculty awarded Ph.D.	0	0	0
	b) No. of faculty registered for Ph.D.	1	1	1
9	Funded research proposals / Consultancy			
	a) No. of research projects Sanctioned	0	0	0
	b) No. of proposals Submitted	0	0	0
	c) Funds received for conducting conferences	0	0	0
	d) Funds generated through consultancy	0	0	0
10	No. of faculty contributing to other activities (in %)	13 / 16	81%	5
11	No. of students presented papers / participated in Conferences (in %)	20 / 319	6%	2
12	No. of students received awards (in %)	17 / 319	5%	2
13	No. of students placed (in %)	23 / 82	28%	2.5
14	Pass Percentage	75 / 82	91.46%	2.5
15	No. of students subjected to disciplinary Proceedings (in %)	10 / 319	3%	-1
<b>TOTAL (out of 100)</b>				<b>36.5</b>


<b>ELECTRONICS &amp; MEDIA TECHNOLOGY</b>				
<b>SI No.</b>	<b>Criteria</b>	<b>Data</b>	<b>Data</b>	<b>Score</b>
1	Student intake - Unfilled Seats (in %)	68 / 66	0%	5
2	No. of New programs introduced			
	a) No. of New programs introduced	3	3	2.5
	b) No. of add-on programs / courses conducted	3	3	2.5
3	No. collaborations / (MoU Signed]	0	0	0
4	Infrastructure / Facilities added	13,75,016	13,75,016	2.5
5	No. of new faculty inducted with Ph.D.	1	1	1
6	Seminars / Conferences / Symposiums			
	a) No. of Symposiums / Conferences conducted	2	2	2.5
	b) No. of symposiums / Conferences attended (in %)	8 / 11	73%	5
	c) No. of faculty presented papers in conferences (in %)	5 / 11	45%	2.5
7	No. of papers published (in %)	2 / 11	18%	1
8	Faculty improved Qualifications			
	a) No. of Faculty awarded Ph.D.	1	1	1
	b) No. of faculty registered for Ph.D.	1	1	1
9	Funded research proposals / Consultancy			
	a) No. of research projects Sanctioned	0	0	0
	b) No. of proposals Submitted	1	1	1
	c) Funds received for conducting conferences	0	0	0
	d) Funds generated through consultancy	0	0	0
10	No. of faculty contributing to other activities (in %)	4 / 11	36%	2.5
11	No. of students presented papers / participated in Conferences (in %)	5 / 269	1%	0
12	No. of students received awards (in %)	7 / 269	2%	2
13	No. of students placed (in %)	20 / 64	31.25%	5
14	Pass Percentage	40 / 64	62.50%	1
15	No. of students subjected to disciplinary Proceedings (in %)	30 / 269	11%	-2.5
<b>TOTAL (out of 100)</b>				<b>35.5</b>


<b>COMPUTER SCIENCE &amp; ENGINEERING</b>				
<b>SI No.</b>	<b>Criteria</b>	<b>Data</b>	<b>Data</b>	<b>Score</b>
1	Student intake - Unfilled Seats (in %)	310 / 314	1%	2.5
2	No. of New programs introduced			
	a) No. of New programs introduced	2	2	2.5
	b) No. of add-on programs / courses conducted	5	5	2.5
3	No. collaborations / (MoU Signed]	2	2	1
4	Infrastructure / Facilities added	10,50,895	10,50,895	2.5
5	No. of new faculty inducted with Ph.D.	0	0	0
6	Seminars / Conferences / Symposiums			
	a) No. of Symposiums / Conferences conducted	2	2	2.5
	b) No. of symposiums / Conferences attended (in %)	31 / 48	65%	5
	c) No. of faculty presented papers in conferences (in %)	3 / 48	6%	0
7	No. of papers published (in %)	1 / 48	2%	0
8	Faculty improved Qualifications			
	a) No. of Faculty awarded Ph.D.	0	0	0
	b) No. of faculty registered for Ph.D.	6	6	5
9	Funded research proposals / Consultancy			
	a) No. of research projects Sanctioned	0	0	0
	b) No. of proposals Submitted	3	3	2.5
	c) Funds received for conducting conferences	0	0	0
	d) Funds generated through consultancy	25,03,000	25,03,000	5
10	No. of faculty contributing to other activities (in %)	26 / 48	54.16%	5
11	No. of students presented papers / participated in Conferences (in %)	79 / 982	8%	3
12	No. of students received awards (in %)	136 / 982	14%	5
13	No. of students placed (in %)	137 / 216	63.42%	5
14	Pass Percentage	200 / 216	92.59%	2.5
15	No. of students subjected to disciplinary Proceedings (in %)	37 / 982	4%	-1
<b>TOTAL (out of 100)</b>				<b>50.5</b>




<b>INFORMATION TECHNOLOGY</b>				
<b>Sl No.</b>	<b>Criteria</b>	<b>Data</b>	<b>Data</b>	<b>Score</b>
1	Student intake - Unfilled Seats (in %)	163 / 157	0%	5
2	No. of New programs introduced			
	a) No. of New programs introduced	0	0	0
	b) No. of add-on programs / courses conducted	2	2	1
3	No. collaborations / (MoU Signed]	0	0	0
4	Infrastructure / Facilities added	3,39,508	3,39,508	1
5	No. of new faculty inducted with Ph.D.	0	0	0
6	Seminars / Conferences / Symposiums			
	a) No. of Symposiums / Conferences conducted	1	1	1
	b) No. of symposiums / Conferences attended (in %)	10 / 30	33%	1
	c) No. of faculty presented papers in conferences (in %)	15 / 30	50%	2.5
7	No. of papers published (in %)	1 / 30	3%	0
8	Faculty improved Qualifications			
	a) No. of Faculty awarded Ph.D.	0	0	0
	b) No. of faculty registered for Ph.D.	7	7	5
9	Funded research proposals / Consultancy			
	a) No. of research projects Sanctioned	0	0	0
	b) No. of proposals Submitted	0	0	0
	c) Funds received for conducting conferences	0	0	0
	d) Funds generated through consultancy	0	0	0
10	No. of faculty contributing to other activities (in %)	17 / 30	57%	5
11	No. of students presented papers / participated in Conferences (in %)	14 / 567	2%	2
12	No. of students received awards (in %)	21 / 567	3%	2
13	No. of students placed (in %)	71 / 145	48.96%	5
14	Pass Percentage	133 / 145	91.72%	2.5
15	No. of students subjected to disciplinary Proceedings (in %)	17 / 567	2%	0
	<b>TOTAL (out of 100)</b>			<b>33</b>


<b>MANAGEMENT</b>			
<b>SI No.</b>	<b>Criteria</b>	<b>Data</b>	<b>Data</b>
1	Student intake - Unfilled Seats (in %)	276 / 300	8%
2	No. of New programs introduced		
	a) No. of New programs introduced	1	1
	b) No. of add-on programs / courses conducted	1	1
3	No. collaborations / (MoU Signed]	2	2
4	Infrastructure / Facilities added	5,64,810	5,64,810
5	No. of new faculty inducted with Ph.D.	3	3
6	Seminars / Conferences / Symposiums		
	a) No. of Symposiums / Conferences conducted	3	3
	b) No. of symposiums / Conferences attended (in %)	18 / 38	47%
	c) No. of faculty presented papers in conferences (in %)	36 / 38	95%
7	No. of papers published (in %)	5 / 38	13%
8	Faculty improved Qualifications		
	a) No. of Faculty awarded Ph.D.	0	0
	b) No. of faculty registered for Ph.D.	1	1
9	Funded research proposals / Consultancy		
	a) No. of research projects Sanctioned	5	5
	b) No. of proposals Submitted	4	4
	c) Funds received for conducting conferences	0	0
	d) Funds generated through consultancy	0	0
10	No. of faculty contributing to other activities (in %)	10 / 38	26%
11	No. of students presented papers / participated in Conferences (in %)	5 / 521	1%
12	No. of students received awards (in %)	0 / 521	0%
13	No. of students placed (in %)	77 / 243	31.68%
14	Pass Percentage	240 / 244	98.36
15	No. of students subjected to disciplinary Proceedings (in %)	14/521	2.60%
	<b>TOTAL (out of 100)</b>		


Score
1
2.5
1
1
2.5
2.5
2.5
2.5
5
1
0
1
5
2.5
0
0
0
0
0
5
2.5
2.5
<b>40</b>


<b>BIOTECHNOLOGY</b>				
<b>SI No.</b>	<b>Criteria</b>	<b>Data</b>	<b>Data</b>	<b>Score</b>
1	Student intake - Unfilled Seats (in %)	173 / 192	9%	1
2	No. of New programs introduced			
	a) No. of New programs introduced	1	1	2.5
	b) No. of add-on programs / courses conducted	0	0	0
3	No. collaborations / (MoU Signed]	1	1	1
4	Infrastructure / Facilities added	1,64,717	1,64,717	1
5	No. of new faculty inducted with Ph.D.	4	4	5
6	Seminars / Conferences / Symposiums			
	a) No. of Symposiums / Conferences conducted	6	6	5
	b) No. of symposiums / Conferences attended (in %)	24 / 27	89%	5
	c) No. of faculty presented papers in conferences (in %)	18 / 27	67%	5
7	No. of papers published (in %)	2 / 27	7%	1
8	Faculty improved Qualifications			
	a) No. of Faculty awarded Ph.D.	3	3	2.5
	b) No. of faculty registered for Ph.D.	5	5	5
9	Funded research proposals / Consultancy			
	a) No. of research projects Sanctioned	6	6	5
	b) No. of proposals Submitted	9	9	5
	c) Funds received for conducting conferences	3,46,000	3,46,000	5
	d) Funds generated through consultancy	40,000	40,000	1
10	No. of faculty contributing to other activities (in %)	12 / 27	44%	2.5
11	No. of students presented papers / participated in Conferences (in %)	23 / 597	4%	2
12	No. of students received awards (in %)	0 / 597	0%	0
13	No. of students placed (in %)	59 / 127	46.45%	5
14	Pass Percentage	124 / 127	97.64%	2.5
15	No. of students subjected to disciplinary Proceedings (in %)	7 / 597	1%	0
<b>TOTAL (out of 100)</b>				<b>62</b>




<b>BIOINFORMATICS</b>				
<b>SI No.</b>	<b>Criteria</b>	<b>Data</b>	<b>Data</b>	<b>Score</b>
1	Student intake - Unfilled Seats (in %)	85 / 91	6%	1
2	No. of New programs introduced			
	a) No. of New programs introduced	1	1	2.5
	b) No. of add-on programs / courses conducted	1	1	1
3	No. collaborations / (MoU Signed]	1	1	1
4	Infrastructure / Facilities added	20,000,00	20,000,00	2.5
5	No. of new faculty inducted with Ph.D.	0	0	0
6	Seminars / Conferences / Symposiums			
	a) No. of Symposiums / Conferences conducted	4	4	5
	b) No. of symposiums / Conferences attended (in %)	2 / 13	15%	1
	c) No. of faculty presented papers in conferences (in %)	2 / 13	15%	1
7	No. of papers published (in %)	4 / 13	31%	2.5
8	Faculty improved Qualifications			
	a) No. of Faculty awarded Ph.D.	0	0	0
	b) No. of faculty registered for Ph.D.	2	2	2.5
9	Funded research proposals / Consultancy			
	a) No. of research projects Sanctioned	3	3	2.5
	b) No. of proposals Submitted	2	2	1
	c) Funds received for conducting conferences	1,22,735	1,22,735	2.5
	d) Funds generated through consultancy	1,70,000	1,70,000	1
10	No. of faculty contributing to other activities (in %)	8 / 13	62%	5
11	No. of students presented papers / participated in Conferences (in %)	11 / 284	4%	2
12	No. of students received awards (in %)	2 / 284	1%	0
13	No. of students placed (in %)	23 / 65	35.38%	5
14	Pass Percentage	58 / 65	89.23	2
15	No. of students subjected to disciplinary Proceedings (in %)	18 / 284	6%	-1



<b>FOOD PROCESSING ENGINEERING</b>				
<b>SI No.</b>	<b>Criteria</b>	<b>Data</b>	<b>Data</b>	<b>Score</b>
1	Student intake - Unfilled Seats (in %)	32 / 91	65%	0
2	No. of New programs introduced			
	a) No. of New programs introduced	1	1	2.5
	b) No. of add-on programs / courses conducted	0	0	0
3	No. collaborations / (MoU Signed]	0	0	0
4	Infrastructure / Facilities added	922440	922440	1
5	No. of new faculty inducted with Ph.D.	0	0	0
6	Seminars / Conferences / Symposiums			
	a) No. of Symposiums / Conferences conducted	1	1	1
	b) No. of symposiums / Conferences attended (in %)	8 / 12	67%	5
	c) No. of faculty presented papers in conferences (in %)	4 / 12	33%	2.5
7	No. of papers published (in %)	0 / 12	0%	0
8	Faculty improved Qualifications			
	a) No. of Faculty awarded Ph.D.	1	1	1
	b) No. of faculty registered for Ph.D.	0	0	0
9	Funded research proposals / Consultancy			
	a) No. of research projects Sanctioned	2	2	2.5
	b) No. of proposals Submitted	1	1	1
	c) Funds received for conducting conferences	0	0	0
	d) Funds generated through consultancy	0	0	0
10	No. of faculty contributing to other activities (in %)	6 / 12	50%	2.5
11	No. of students presented papers / participated in Conferences (in %)	27 / 208	13%	5
12	No. of students received awards (in %)	16 / 208	8%	3
13	No. of students placed (in %)	7 / 62	11.29%	2.5
14	Pass Percentage	54 / 62	87.10%	2
15	No. of students subjected to disciplinary Proceedings (in %)	15 / 208	7%	-1
	<b>TOTAL (out of 100)</b>			<b>30.5</b>


<b>COMPUTER APPLICATIONS</b>				
<b>SI No.</b>	<b>Criteria</b>	<b>Data</b>	<b>Data</b>	<b>Score</b>
1	Student intake - Unfilled Seats (in %)	120 / 120	0%	5
2	No. of New programs introduced			
	a) No. of New programs introduced	0	0	0
	b) No. of add-on programs / courses conducted	2	2	1
3	No. collaborations / (MoU Signed]	2	2	1
4	Infrastructure / Facilities added	85,820	85,820	1
5	No. of new faculty inducted with Ph.D.	0	0	0
6	Seminars / Conferences / Symposiums			
	a) No. of Symposiums / Conferences conducted	1	1	1
	b) No. of symposiums / Conferences attended (in %)	5 / 28	18%	0
	c) No. of faculty presented papers in conferences (in %)	13 / 28	46%	2.5
7	No. of papers published (in %)	5 / 28	18%	1
8	Faculty improved Qualifications			
	a) No. of Faculty awarded Ph.D.	1	1	1
	b) No. of faculty registered for Ph.D.	10	10	5
9	Funded research proposals / Consultancy			
	a) No. of research projects Sanctioned	0	0	0
	b) No. of proposals Submitted	2	2	1
	c) Funds received for conducting conferences	30000	30000	1
	d) Funds generated through consultancy	0	0	0
10	No. of faculty contributing to other activities (in %)	20 / 28	71%	5
11	No. of students presented papers / participated in Conferences (in %)	16 / 374	4%	2
12	No. of students received awards (in %)	12 / 374	3%	2
13	No. of students placed (in %)	38 / 118	32.20%	5
14	Pass Percentage	114 / 119	95.79%	2.5
15	No. of students subjected to disciplinary Proceedings (in %)	18 / 374	4%	-1
<b>TOTAL (out of 100)</b>				<b>36</b>


EDUCATION				
SI No.	Criteria	Data	Data	Score
1	Student intake - Unfilled Seats (in %)	47 / 100	53%	0
2	No. of New programs introduced			
	a) No. of New programs introduced	1	1	2.5
	b) No. of add-on programs / courses conducted	0	0	0
3	No. collaborations / (MoU Signed]	0	0	0
4	Infrastructure / Facilities added	0	0	0
5	No. of new faculty inducted with Ph.D.	0	0	0
6	Seminars / Conferences / Symposiums			
	a) No. of Symposiums / Conferences conducted	0	0	0
	b) No. of symposiums / Conferences attended (in %)	2 / 5	40%	2.5
	c) No. of faculty presented papers in conferences (in %)	1 / 5	20%	1
7	No. of papers published (in %)	2 / 5	40%	2.5
8	Faculty improved Qualifications			
	a) No. of Faculty awarded Ph.D.	0	0	0
	b) No. of faculty registered for Ph.D.	1	1	1
9	Funded research proposals / Consultancy			
	a) No. of research projects Sanctioned	0	0	0
	b) No. of proposals Submitted	3	3	2.5
	c) Funds received for conducting conferences	0	0	0
	d) Funds generated through consultancy	0	0	0
10	No. of faculty contributing to other activities (in %)	2 / 5	40%	2.5
11	No. of students presented papers / participated in Conferences (in %)	0 / 52	0%	0
12	No. of students received awards (in %)	6 / 52	12%	5
13	No. of students placed (in %)	4 / 46	8.69%	0
14	Pass Percentage	45 / 46	97.83	2.5
15	No. of students subjected to disciplinary Proceedings (in %)	0	0	2.5
	<b>TOTAL (out of 100)</b>			<b>24.5</b>





<b>ENGLISH</b>			
<b>SI No.</b>	<b>Criteria</b>	<b>Data</b>	<b>Data</b>
1	Student intake - Unfilled Seats (in %)	4 / 30	87%
2	No. of New programs introduced		
	a) No. of New programs introduced	2	2
	b) No. of add-on programs / courses conducted	2	2
3	No. collaborations / (MoU Signed]	0	0
4	Infrastructure / Facilities added	0	0
5	No. of new faculty inducted with Ph.D.	1	1
6	Seminars / Conferences / Symposiums		
	a) No. of Symposiums / Conferences conducted	1	1
	b) No. of symposiums / Conferences attended (in %)	3 / 14	21%
	c) No. of faculty presented papers in conferences (in %)	15 / 14	107%
7	No. of papers published (in %)	8 / 14	57%
8	Faculty improved Qualifications		
	a) No. of Faculty awarded Ph.D.	2	2
	b) No. of faculty registered for Ph.D.	0	0
9	Funded research proposals / Consultancy		
	a) No. of research projects Sanctioned	0	0
	b) No. of proposals Submitted	2	2
	c) Funds received for conducting conferences	0	0
	d) Funds generated through consultancy	0	0
10	No. of faculty contributing to other activities (in %)	10 / 14	71%
11	No. of students presented papers / participated in Conferences (in %)	1 / 17	5%
12	No. of students received awards (in %)	0 / 17	0
13	No. of students placed (in %)	0	0
14	Pass Percentage	2 / 2	100%
15	No. of students subjected to disciplinary Proceedings (in %)	0	0
<b>TOTAL (out of 100)</b>			


Score
0
2.5
1
0
0
1
1
1
5
5
2.5
0
0
1
0
0
5
2
0
0
2.5
2.5
<b>32</b>


<b>MATHEMATICS</b>			
<b>SI No.</b>	<b>Criteria</b>	<b>Data</b>	<b>Data</b>
1	Student intake - Unfilled Seats (in %)	NA	-
2	No. of New programs introduced		
	a) No. of New programs introduced	2	2
	b) No. of add-on programs / courses conducted	0	0
3	No. collaborations / (MoU Signed]	0	0
4	Infrastructure / Facilities added	3,63,286	3,63,286
5	No. of new faculty inducted with Ph.D.	2	2
6	Seminars / Conferences / Symposiums		
	a) No. of Symposiums / Conferences conducted	1	1
	b) No. of symposiums / Conferences attended (in %)	4 / 22	18%
	c) No. of faculty presented papers in conferences (in %)	3 / 22	14%
7	No. of papers published (in %)	1 / 22	4%
8	Faculty improved Qualifications		
	a) No. of Faculty awarded Ph.D.	0	0
	b) No. of faculty registered for Ph.D.	0	0
9	Funded research proposals / Consultancy		
	a) No. of research projects Sanctioned	1	1
	b) No. of proposals Submitted	4	4
	c) Funds received for conducting conferences	0	0
	d) Funds generated through consultancy	0	0
10	No. of faculty contributing to other activities (in %)	4 / 22	18%
11	No. of students presented papers / participated in Conferences (in %)	1 / 12	8%
12	No. of students received awards (in %)	0 / 12	0%
13	No. of students placed (in %)	0	0
14	Pass Percentage	2 / 2	100%
15	No. of students subjected to disciplinary Proceedings (in %)	1 / 12	8%
	<b>TOTAL (out of 95)</b>		
	<b>TOTAL (out of 100)</b>		

Score
-
2.5
0
0
1
2.5
1
1
1
0
0
0
1
2.5
0
0
0
1
3
0
0
2.5
-2.5
<b>15.5</b>
<b>16.0</b>

<b>PHYSICS</b>				
<b>SI No.</b>	<b>CRITERIA</b>	<b>Data</b>	<b>Data</b>	<b>Score</b>
1	Student intake - Unfilled Seats (in %)	6 / 30	80%	0
2	No. of New programs introduced			
	a) No. of New programs introduced	3	3	2.5
	b) No. of add-on programs / courses conducted	0	0	0
3	No. collaborations / (MoU Signed]	0	0	0
4	Infrastructure / Facilities added	2,23,112	2,23,112	1
5	No. of new faculty inducted with Ph.D.	0	0	0
6	Seminars / Conferences / Symposiums			
	a) No. of Symposiums / Conferences conducted	1	1	1
	b) No. of symposiums / Conferences attended (in %)	10 / 11	90%	5
	c) No. of faculty presented papers in conferences (in %)	7 / 11	64%	5
7	No. of papers published (in %)	51 / 11	463%	5
8	Faculty improved Qualifications			
	a) No. of Faculty awarded Ph.D.	0	0	0
	b) No. of faculty registered for Ph.D.	0	0	0
9	Funded research proposals / Consultancy			
	a) No. of research projects Sanctioned	1	1	1
	b) No. of proposals Submitted	0	0	0
	c) Funds received for conducting conferences	1,30,000	1,30,000	2.5
	d) Funds generated through consultancy	0	0	0
10	No. of faculty contributing to other activities (in %)	6 / 11	55%	5
11	No. of students presented papers / participated in Conferences (in %)	0	0	0
12	No. of students received awards (in %)	0 / 31	0	0
13	No. of students placed (in %)	0	0	0
14	Pass Percentage	6 / 6	100%	2.5
15	No. of students subjected to disciplinary Proceedings (in %)	0	0	2.5
	<b>TOTAL (out of 100)</b>			<b>33</b>




<b>CHEMISTRY</b>				
<b>SI No.</b>	<b>Criteria</b>	<b>Data</b>	<b>Data</b>	<b>Score</b>
1	Student intake - Unfilled Seats (in %)	20 / 30	33%	0
2	No. of New programs introduced			
	a) No. of New programs introduced	2	2	2.5
	b) No. of add-on programs / courses conducted	Nil	Nil	0
3	No. collaborations / (MoU Signed]	Nil	Nil	0
4	Infrastructure / Facilities added	3,63,286	3,63,286	1
5	No. of new faculty inducted with Ph.D.	2	2	2.5
6	Seminars / Conferences / Symposiums			
	a) No. of Symposiums / Conferences conducted	1 / 10	1	1
	b) No. of symposiums / Conferences attended (in %)	7 / 10	70%	5
	c) No. of faculty presented papers in conferences (in %)	4 / 10	40%	2.5
7	No. of papers published (in %)	2 / 10	20%	1
8	Faculty improved Qualifications			
	a) No. of Faculty awarded Ph.D.	0	0	0
	b) No. of faculty registered for Ph.D.	0	0	0
9	Funded research proposals / Consultancy			
	a) No. of research projects Sanctioned	1	1	1
	b) No. of proposals Submitted	4	4	2.5
	c) Funds received for conducting conferences	0	0	0
	d) Funds generated through consultancy	0	0	0
10	No. of faculty contributing to other activities (in %)	4 / 10	40%	2.5
11	No. of students presented papers / participated in Conferences (in %)	1 / 34	2%	2
12	No. of students received awards (in %)	0 / 34	0 / 34	0
13	No. of students placed (in %)	NA	NA	-
14	Pass Percentage	NA	NA	-
15	No. of students subjected to disciplinary Proceedings (in %)	1 / 34	2%	0
	<b>TOTAL (out of 90)</b>			<b>23.5</b>
	<b>TOTAL (out of 100)</b>			<b>26</b>



CIVIL	46.5
MECHANICAL	43
MANAGEMENT	40
ECE	64
EEE	39
EIE	36.5
EMT	35.5
CSE	50.5
IT	33
BIOTECH	62
BIOINFO	40
FPE	30.5
CA	36
EDU	24.5
ENGLISH	32
MATHS	16
PHYSICS	33
CHEMISTRY	26

Unfiled se New Progr Add-on Prt Collaborati Infrastruct New Ph.D. Conferenc Confernc Papers prePapers pul Ph.D. awai Ph.D. regis Projects s: Proposals Funds rec: Consultant Faculty Cc Students # Placement Pass perc Disciplinary Proceedings

CIVIL	2.5	2.5	2.5	0	1	0	5	5	2.5	1	1	1	2.5	5	1	1	5	0	2	5	1	0
MECHANICAL	1	0	5	1	1	0	5	1	1	1	5	5	0	2.5	0	1	2.5	2	3	5	1	0
MANAGEMENT	1	2.5	1	1	2.5	2.5	2.5	2.5	5	1	0	1	5	2.5	0	0	0	0	0	5	2.5	2.5

Unfiled se New Progr Add-on Prt Collaborati Infrastruct New Ph.D. Conferenc Confernc Papers prePapers pul Ph.D. awai Ph.D. regis Projects s: Proposals Funds rec: Consultant Faculty Cc Students # Placement Pass perc Disciplinary Proceedings

ECE	2.5	0	5	1	2.5	0	5	5	5	1	1	5	0	1	5	5	5	5	3	5	2	0
EEE	0	0	1	1	2.5	0	2.5	5	1	1	1	5	0	0	1	2.5	5	2	2	5	2.5	-1
EIE	2.5	2.5	1	1	1	1	2.5	5	5	1	0	1	0	0	0	0	5	2	2	2.5	2.5	-1
EMT	5	2.5	2.5	0	2.5	1	2.5	5	2.5	1	1	1	0	1	0	0	2.5	0	2	5	1	-2.5

Unfiled se New Progr Add-on Prt Collaborati Infrastruct New Ph.D. Conferenc Confernc Papers prePapers pul Ph.D. awai Ph.D. regis Projects s: Proposals Funds rec: Consultant Faculty Cc Students # Placement Pass perc Disciplinary Proceedings

CSE	2.5	2.5	2.5	1	2.5	0	2.5	5	0	0	0	5	0	2.5	0	5	5	3	5	5	2.5	-1
	0	0	0	0	0	0	0	0	0	0	0	0	0	0	0	0	5	2	2	5	2.5	0

Projects s: Proposals Funds rec: Consultant Faculty Cc Students # Placement Pass perc Disciplinary Proceedings

5	5	5	1	2.5	2	0	5	2.5	0
2.5	1	2.5	1	5	2	0	5	2	-1
2.5	1	0	0	2.5	5	3	2.5	2	-1

Projects s: Proposals Funds rec: Consultant Faculty Cc Students # Placement Pass perc Disciplinary Proceedings

0	1	1	0	5	2	2	5	2.5	-1
0	2.5	0	0	2.5	0	5	0	2.5	2.5
0	1	0	0	5	2	0	0	2.5	2.5
1	2.5	0	0	0	3	0	0	2.5	-2.5
1	0	2.5	0	5	0	0	0	2.5	2.5
1	2.5	0	0	2.5	2	0	0	0	0

