

SEESHA – KRCH CME SERIES

COMMUNITY HEALTH

Dr. J. Gnanaraj MS, MCh (Urology), FARSI, FICS, FIAGES

Health

- WHO definition

A state of complete physical, mental and social well-being and not merely the absence of disease or infirmity



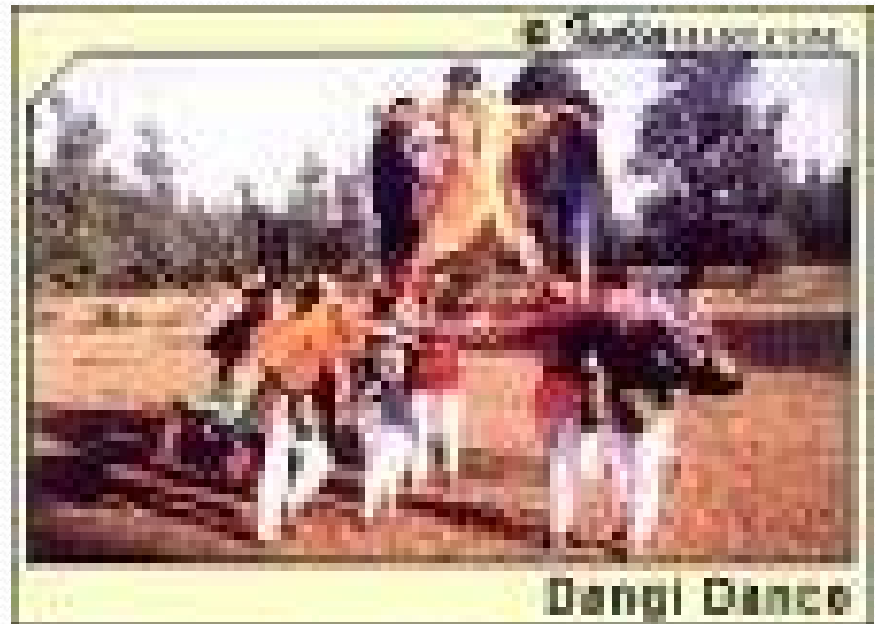
Early Public health interventions

- Bible and early Romans about human waste disposal
- Chinese variolation in 1000 BC for small pox
- Vaccination by Edward Jenner in 1820s



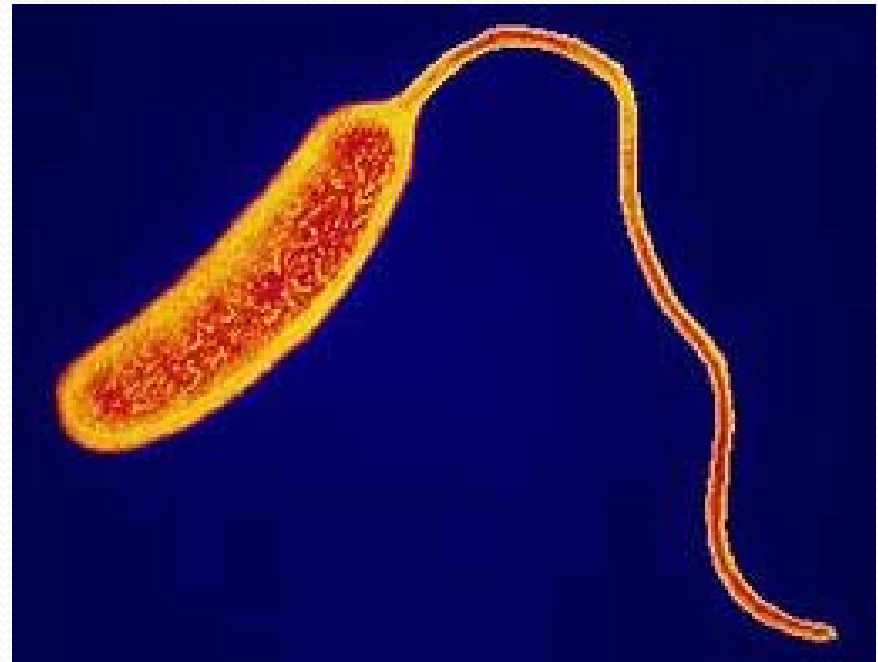
An addition to WHO definition

- Spiritual health
- The Kukna story



Cholera epidemic in Dangs

- Can kill in few hours {10 to 20 liters of diarrhea in a day}
- Rice water stools and rotten fish smell
- Rehydration / Doxycycline



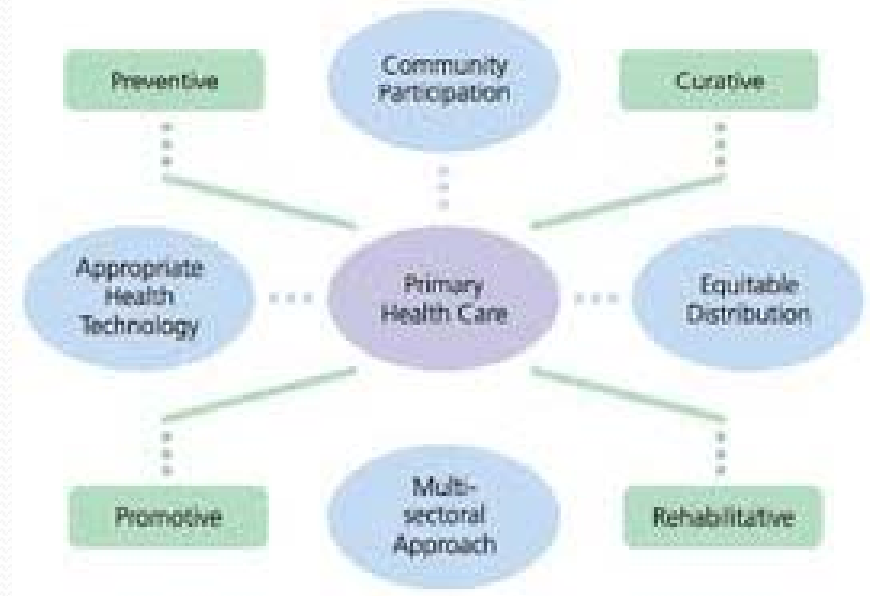
Iron & B complex deficiency

- From food is expensive
- Tablets are cheaper
- Deworming {like in sheep} helps



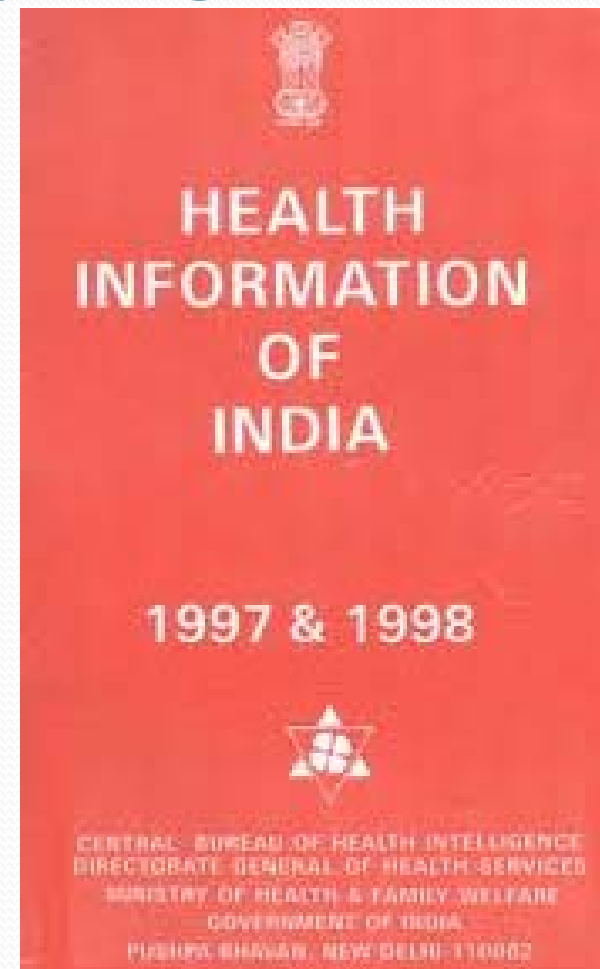
Types of health care

- Primary
- Secondary
- Tertiary



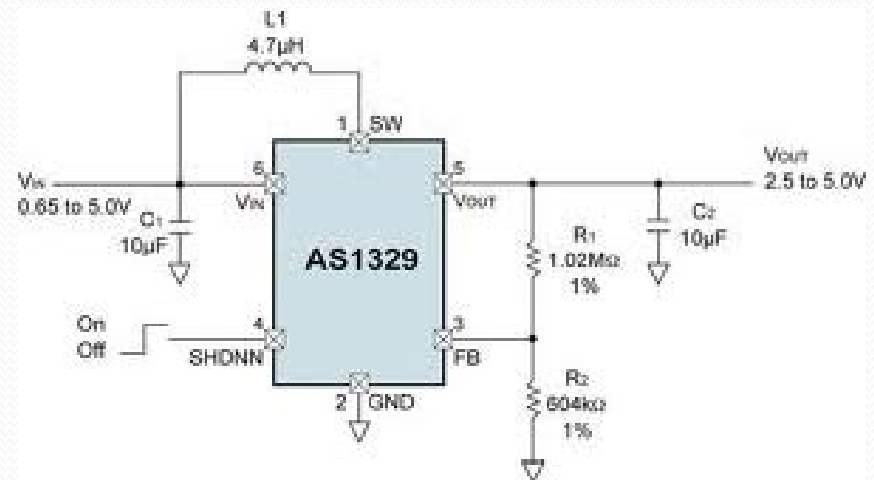
Government program

- Community health center for 1.2 lakh population
- Primary health center for 30000 population
- Sub center for 5000 population



Engineers help in Primary care

- 1 doctor per 2670 population while 1 nurse per 670 population
- Web based consultation, treatment protocols
- Communication with hand held instruments



Newer models

- Diagnostic camp model for surgical care
- Surgical camps of SEESHA
- Health care plans
- [High quality surgical care at low cost: the diagnostic camp model ...](#)
- by J Gnanaraj - 2007 - [Related articles](#)
tively the **Diagnostic Camp Model** of the institution meets the surgical needs of rural patients, The ability of the **diagnostic camp model** to provide ef- ...
www.springerlink.com/index/A1682K6708076G71.pdf
- 