



UI GreenMetric Questionnaire

University : Karunya Institute of Technology and Sciences
Country : India
Web Address : www.karunya.edu

[1] Setting and Infrastructure (SI)

[1.3] Number of Campus Sites: 1



KITS Administrative Block



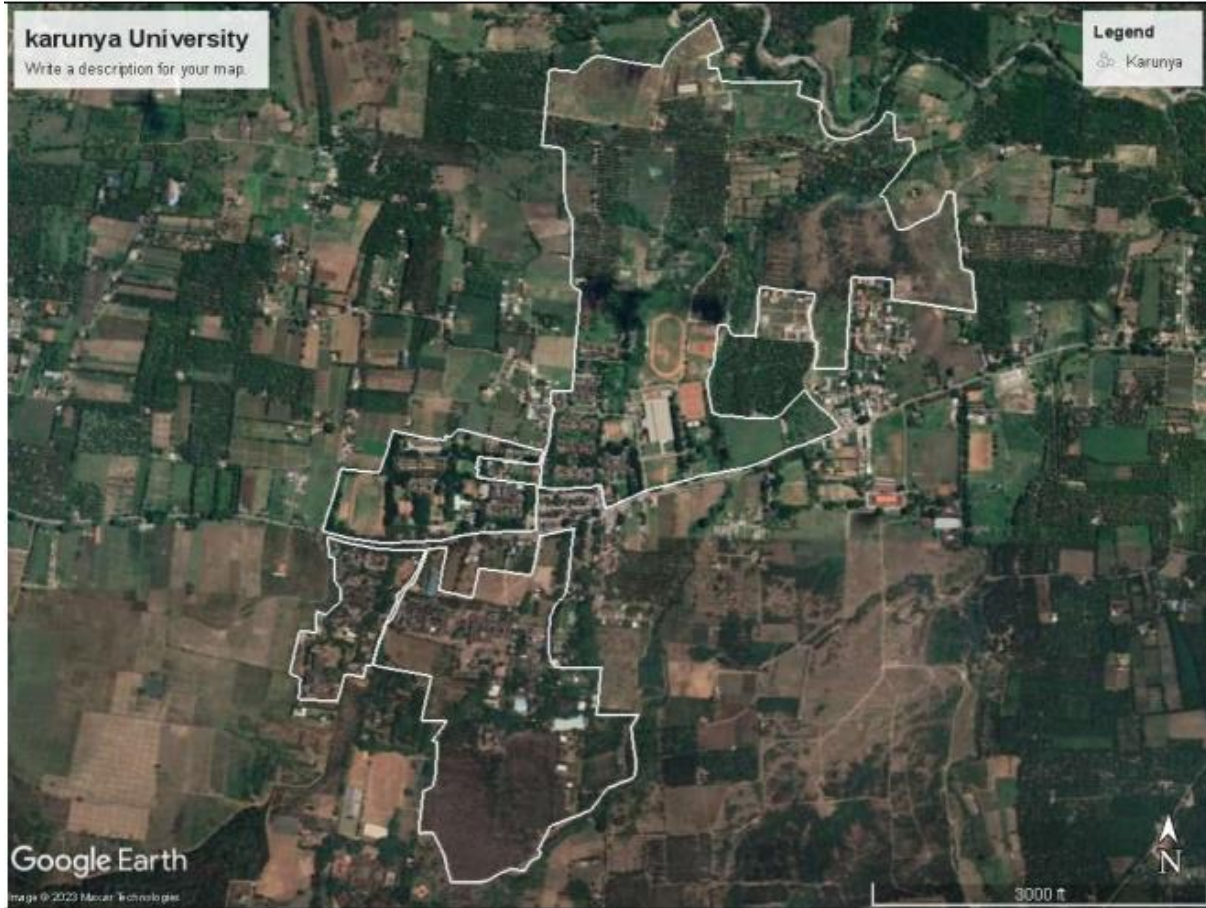
[1.4] Campus Setting



KITS Aerial View



[1.5] Total Campus Area (meter)



Total Campus Area (Karunya Institute of Technology and Sciences)



[1.7] Total campus buildings area



Civil Engineering



Artificial Intelligence



Aerospace Engineering



Computer Science and Engineering



Electronics and Communication Engineering



Electrical and Electronics Engineering, Biomedical Engineering, Arts and Sciences



Robotics Engineering



Biotechnology



Food Processing Technology



School of Agriculture Sciences



Karunya Media Centre



Central Library



Centre for Training and Placement



Agriculture Labs



NCC



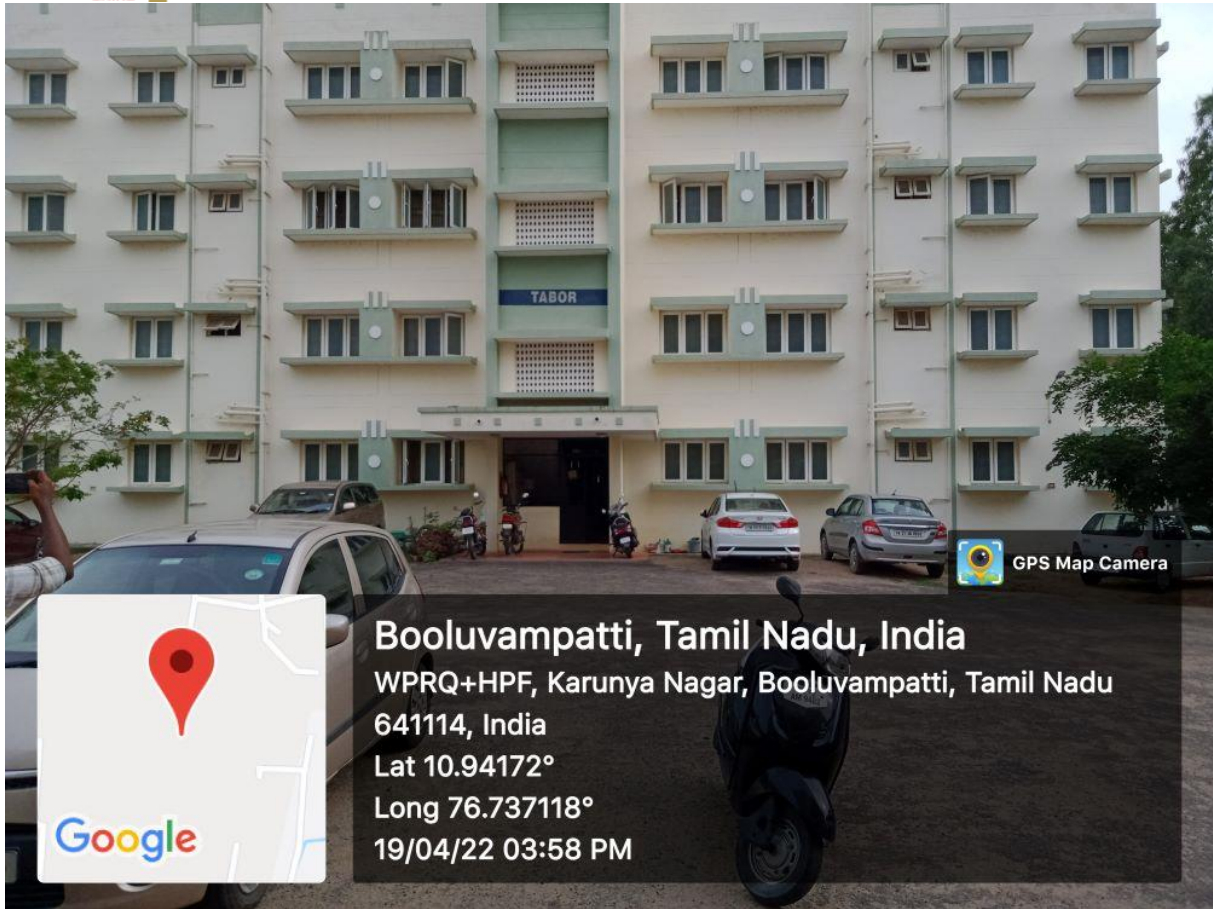
Computer Technology Centre



Gents Residence



Ladies Residence



Staff Quarters



Staff Quarters



1.8 The ratio of open space area to total area



Ratio of open space towards total area: 95.79%

[1.9] Total Area on Campus Covered in Forest Vegetation (meter²)



Total Forest Vegetation Area (Karunya Institute of Technology and Sciences)

[1.10] Total area on campus covered in planted vegetation (meter²)



Paddy Nursery



Paddy - Ready for Transplanting



Paddy – Transplanting in the Main Field







[1.11] Total area on campus for water absorption besides the forest and planted vegetation (meter²)



Vehicle Car Parking



Agri Block corridor(Inside)



Hostel front yard



Agri Block corridor(Outside)



[1.19] Percentage of operation and maintenance activities of building in one year period



Solar Power Plant



Solar Water Heating System



Solar Panels

[1.20] Campus facilities for disabled and special needs



Elevator at the School of Agricultural Sciences



Lavatory at the aerospace block



Ramp at the entrance of the ECE department

[1.21] Security and safety facilities



Fire Fighting System



CCTV Camera



[1.21] Health infrastructure facilities for students, academics, and administrative staff's wellbeing



SEESHA Hospital

[1.23] Conservation: plant, animal, and wildlife, genetic resources for food and agriculture secured in either medium or long-term conservation facilities



Shadenet house at North farm



Mist chamber at North farm



Polyhouse at North farm



Cattle shed



Veterinary clinic